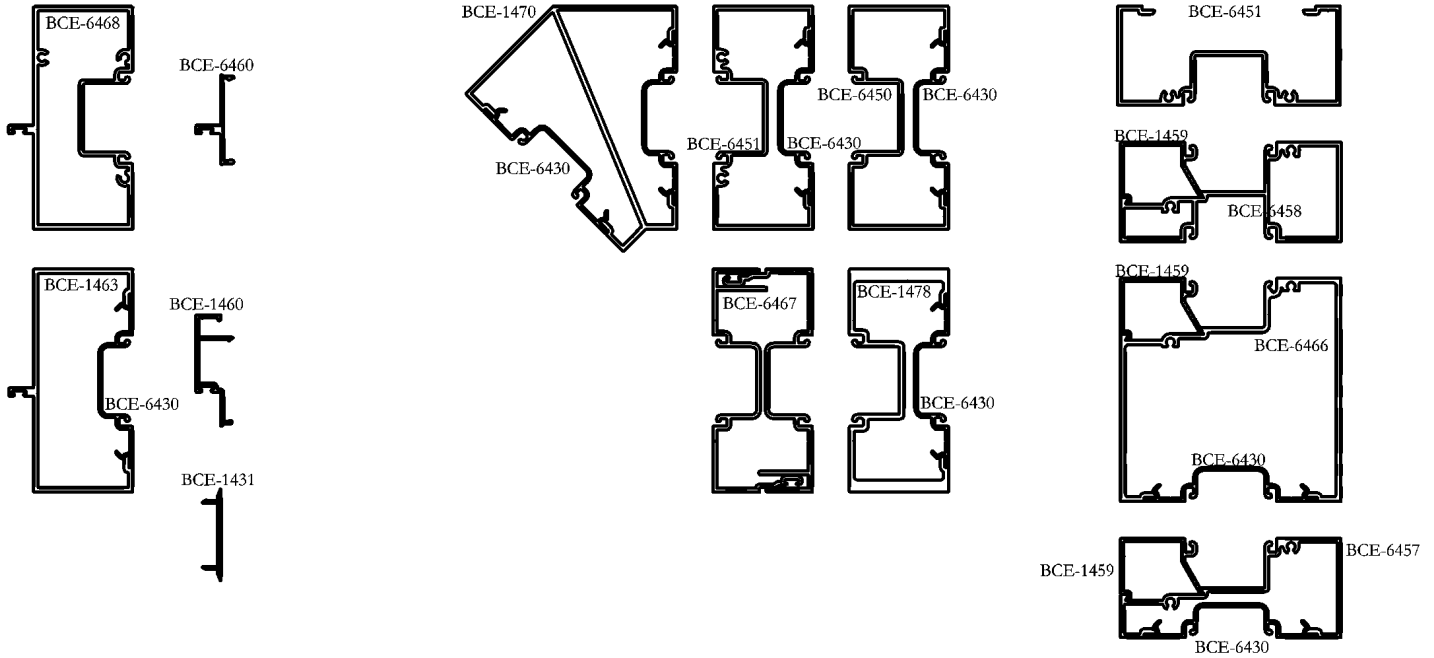


1/4 SIZE DETAILS



THIS SYSTEM IS DESIGNED TO BE ASSEMBLED WITH #10 SCREWS.

GASKETS

UNIVERSAL RUBBER COMPANY
800-782-2375

2028
2090

1" GLASS (INTERIOR AND EXTERIOR)
5/8" GLASS IN 1-3/8" POCKET

REED RUBBER PRODUCTS
800-325-9698

3734
4893

GASKET (INTERIOR AND EXTERIOR)
ALTERNATIVE

TREMCO
800-321-6357

TR-2062E

GASKET (INTERIOR AND EXTERIOR)

DOOR PILE

SCHLEGEL CORP.
800-828-6237

AS SELECTED

USED WITH BCE-1460 AND LIKE SHAPE

AMESBURY GROUP INC.
704-878-6892

AS SELECTED

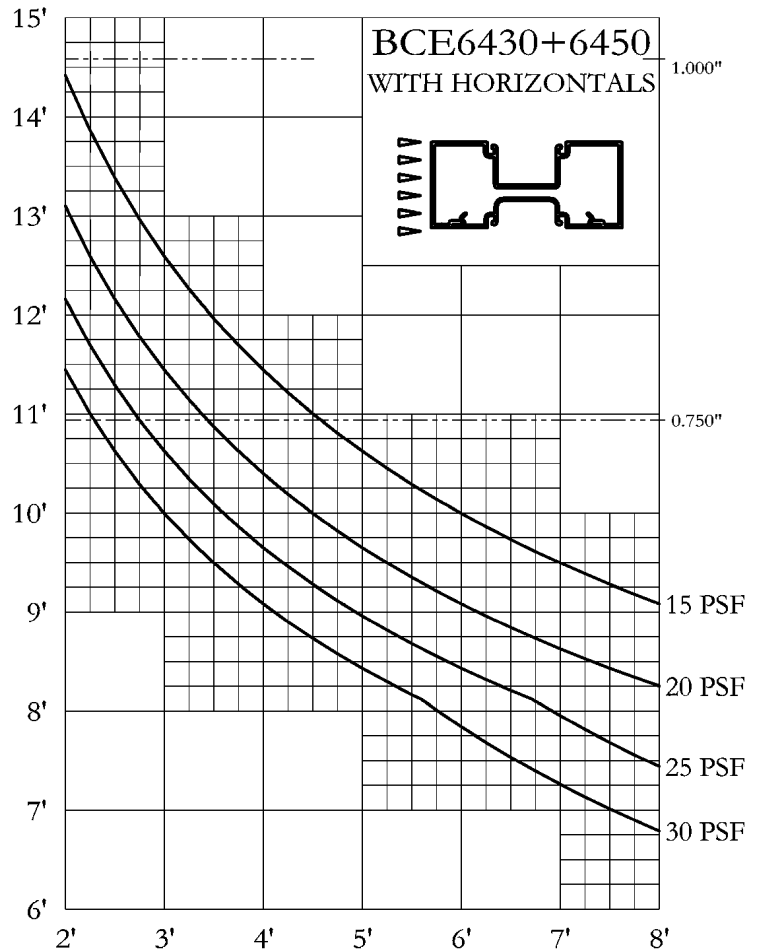
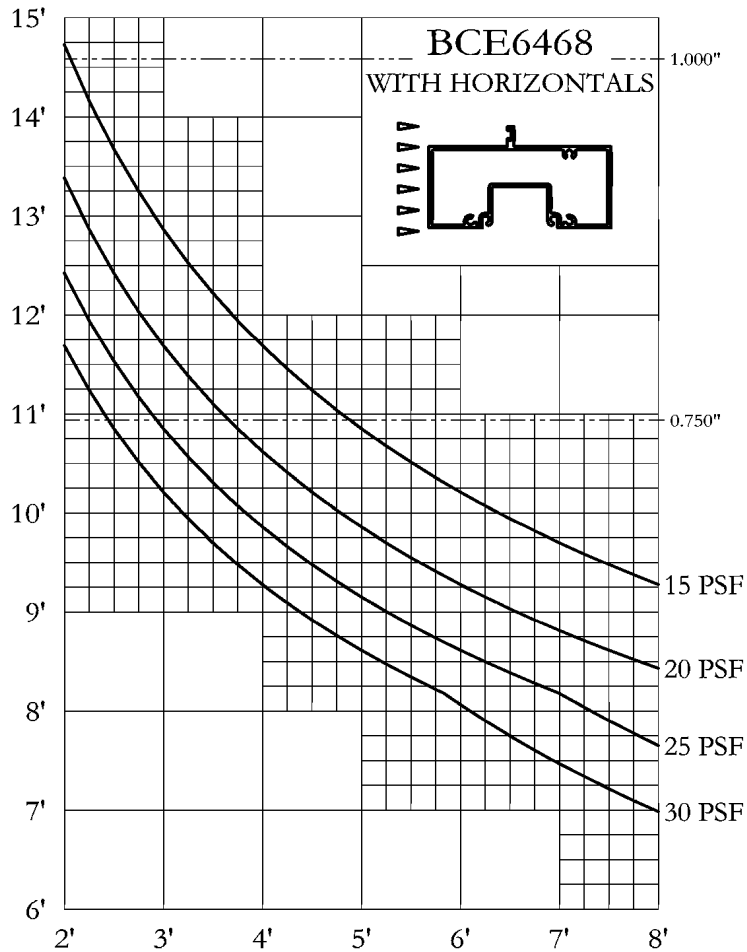
USED WITH BCE-1460 AND LIKE SHAPES

NO TEST DATA AVAILABLE
TREDEGAR EXTRUSIONS INC. DOES NOT MAKE ANY WARRANTY EXPRESS OR IMPLIED INCLUDING
NO WARRANTY OF MERCHANTABILITY OR FITNESS FOR A PARTICULAR PURPOSE AND RESERVES
THE RIGHT TO MAKE CHANGES
REPRODUCTION RIGHTS RESERVED

PRICING FACTORS
2" X 4 1/2" FLUSH GLAZED
BCE-6450 SERIES



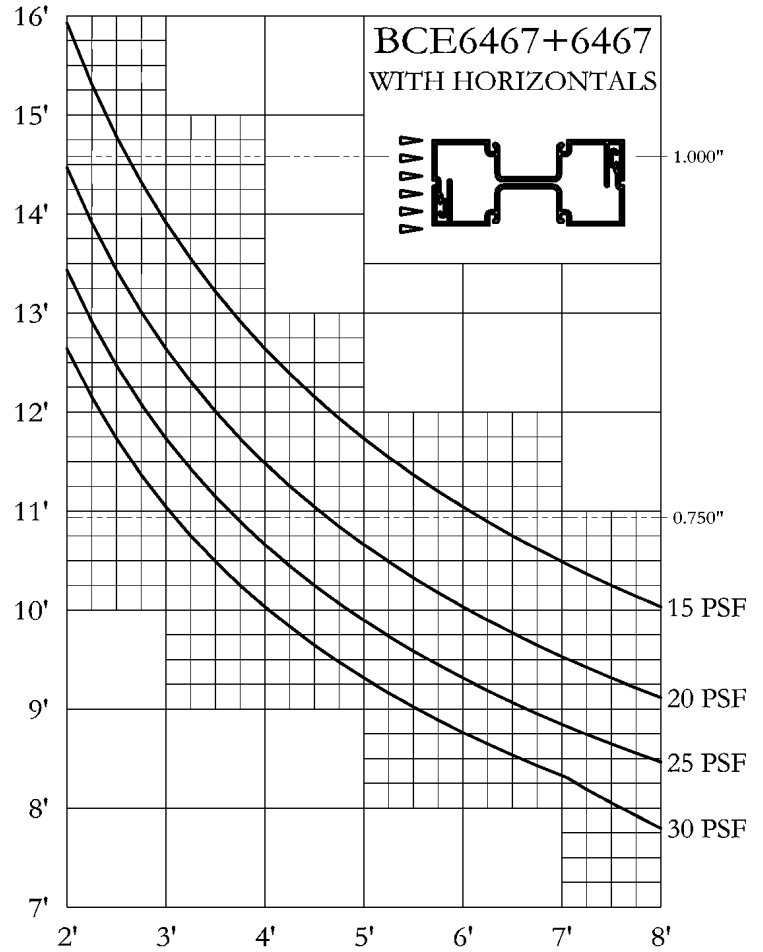
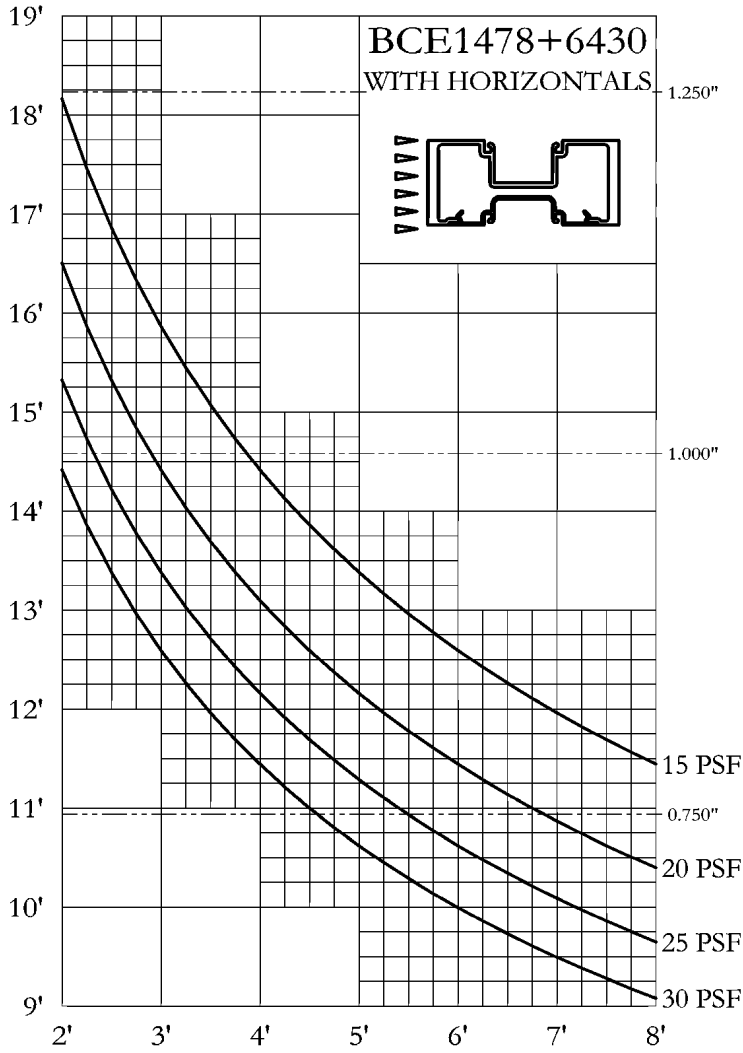
WEIGHT PER FT	EST PER	FACTOR	CAVITY AREA	PART NUMBER	STRUCTURAL VALUES			1/8 SIZE DETAILS
					X-X	I	Y-Y	
1.152	24.439	21	N/A	BCE6450	0.434	I	2.584	
					0.362	S	1.148	
1.246	25.487	20	N/A	BCE6451	0.464	I	2.697	
					0.372	S	1.199	
1.034	21.202	21	N/A	BCE6457	0.348	I	2.099	
					0.346	S	0.832	
1.366	16.348	20	N/A	BCE6458	0.474	I	2.332	
					0.403	S	0.949	
0.425	11.493	27	N/A	BCE6430	0.021	I	0.366	
					0.053	S	0.209	
0.325	8.543	26	N/A	BCE1459	0.039	I	0.100	
					0.047	S	0.111	
0.210	5.869	28	N/A	BCE6460	0.005	I	0.045	
					0.011	S	0.045	
1.748	30.521	17	N/A	BCE6466	4.669	I	3.072	
					1.917	S	1.203	
0.977	21.064	22	N/A	BCE6467	0.164	I	1.988	
					0.128	S	0.864	
1.712	17.165	19	N/A	BCE6468	0.880	I	3.145	
					0.619	S	1.387	
0.163	4.938	30	N/A	BCE1431	0.001	I	0.040	
					0.003	S	0.043	
0.308	8.644	28	N/A	BCE1460	0.013	I	0.120	
					0.027	S	0.096	
1.124	20.894	19	N/A	BCE1463	0.564	I	2.801	
					0.420	S	1.238	
1.424	27.580	19	N/A	BCE1470	1.619	I	3.345	
					0.625	S	1.143	
2.086	23.440	11	N/A	BCE1478	0.677	I	5.532	
					0.592	S	2.459	



#1 THESE WINDLOAD CHARTS ARE BASED UPON THE LESSER OF DEFLECTION RATIO ($L/175$) OR STRESS (12667)

#2 THESE STRUCTURAL CURVES ARE ESTIMATES AND ARE PRESENTED TO THE BEST KNOWLEDGE OF THE WILLIAM L BONNELL CO. IT IS, HOWEVER, THE RESPONSIBILITY OF THE CUSTOMER TO BE SATISFIED THAT THE CURVES ARE CORRECT. THE WILLIAM L BONNELL CO. MAY NOT BE HELD RESPONSIBLE IN ANY WAY FOR THE FAILURE OF PERFORMANCE RESULTING FROM THE USE OF THESE CURVES.

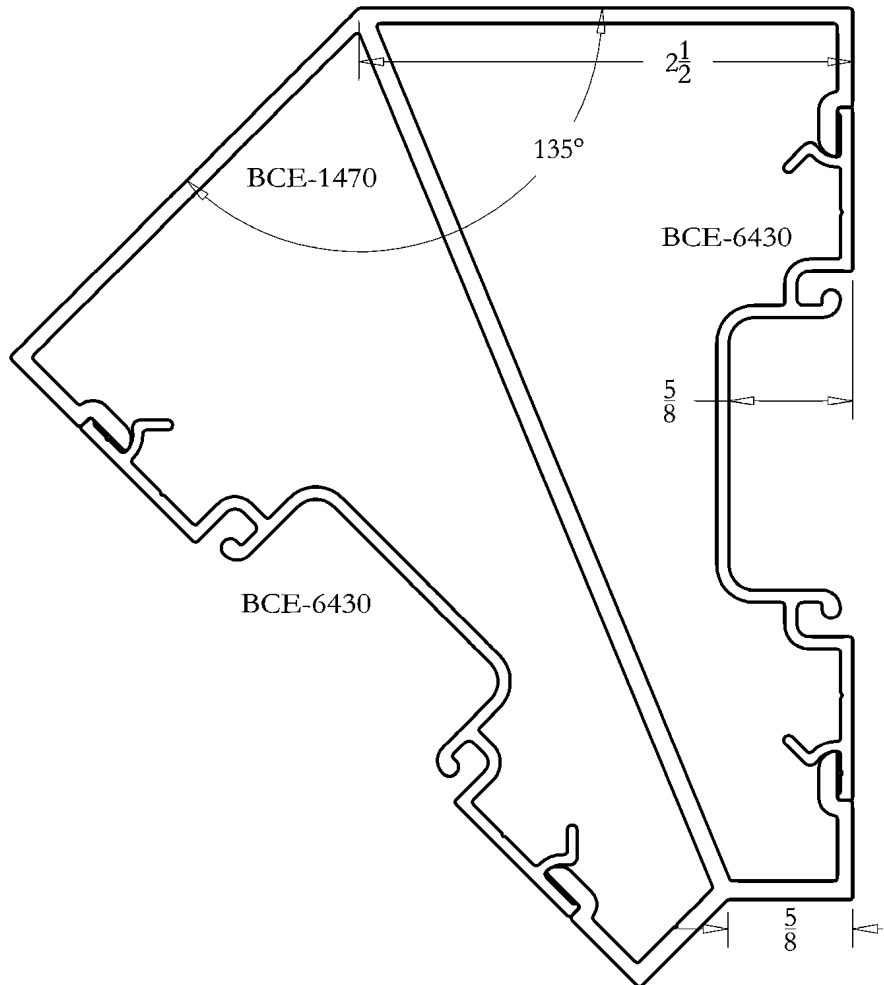
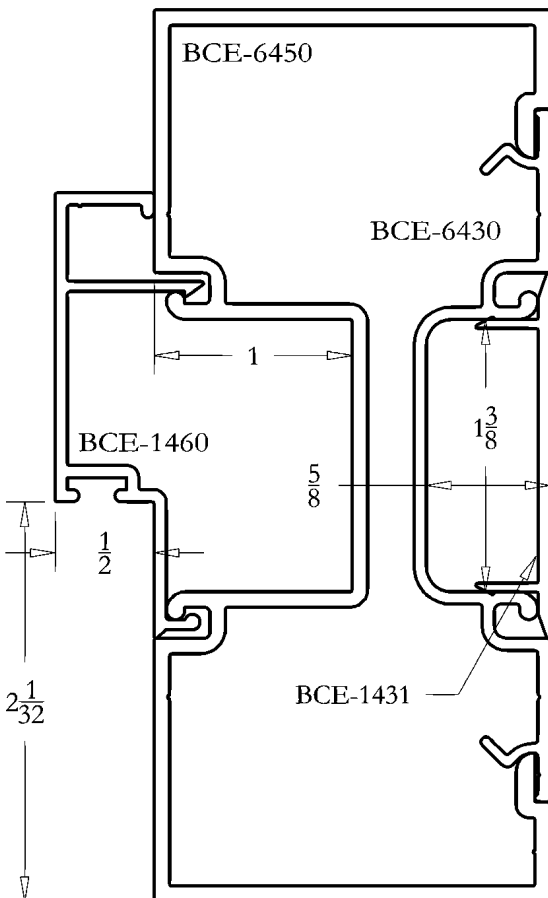
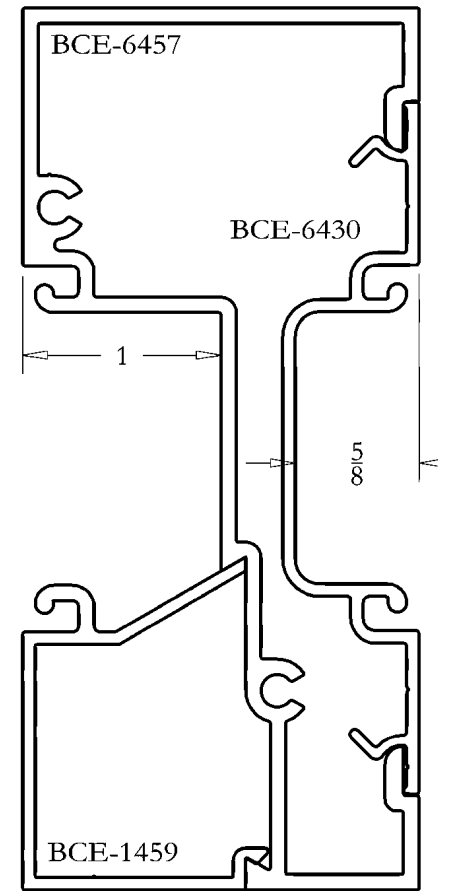
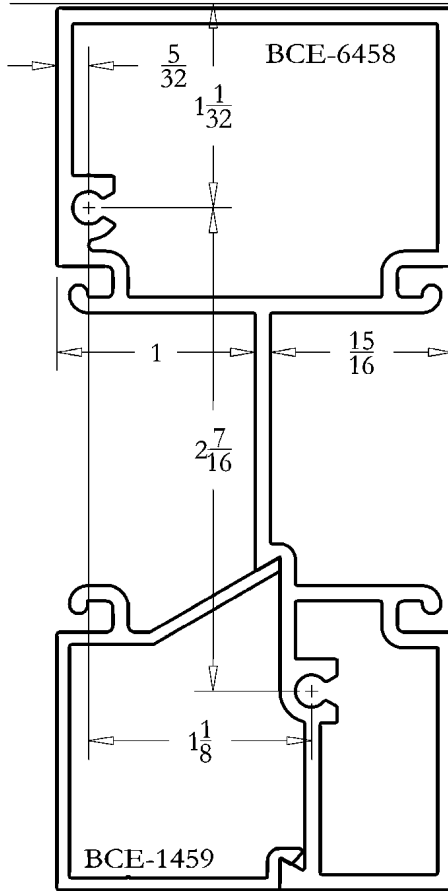
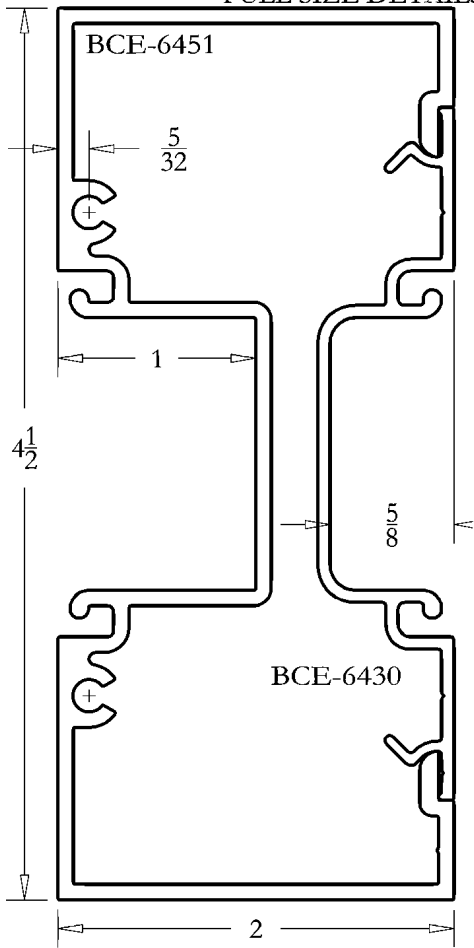
WINDLOAD CHARTS
2" X 4 1/2" FLUSH GLAZED
BCE-6450 SERIES



#1 THESE WINDLOAD CHARTS ARE BASED UPON THE LESSER OF DEFLECTION RATIO (L/175) OR STRESS (12667)

#2 THESE STRUCTURAL CURVES ARE ESTIMATES AND ARE PRESENTED TO THE BEST KNOWLEDGE OF THE WILLIAM L BONNELL CO. IT IS, HOWEVER, THE RESPONSIBILITY OF THE CUSTOMER TO BE SATISFIED THAT THE CURVES ARE CORRECT. THE WILLIAM L BONNELL CO. MAY NOT BE HELD RESPONSIBLE IN ANY WAY FOR THE FAILURE OF PERFORMANCE RESULTING FROM THE USE OF THESE CURVES.

FULL SIZE DETAILS



DETAIL SHEET
2" X 4 1/2" FLUSH GLAZED
BCE-6450

FULL SIZE DETAILS

